

980nm High Power Polarization Insensitive Isolator

Features

- Low Insertion Loss
- High Isolation
- High Power Handling
- High Return Loss

Applications

- Fiber Laser
- Instrumentation
- Fiber Amplifier
- Lab Research

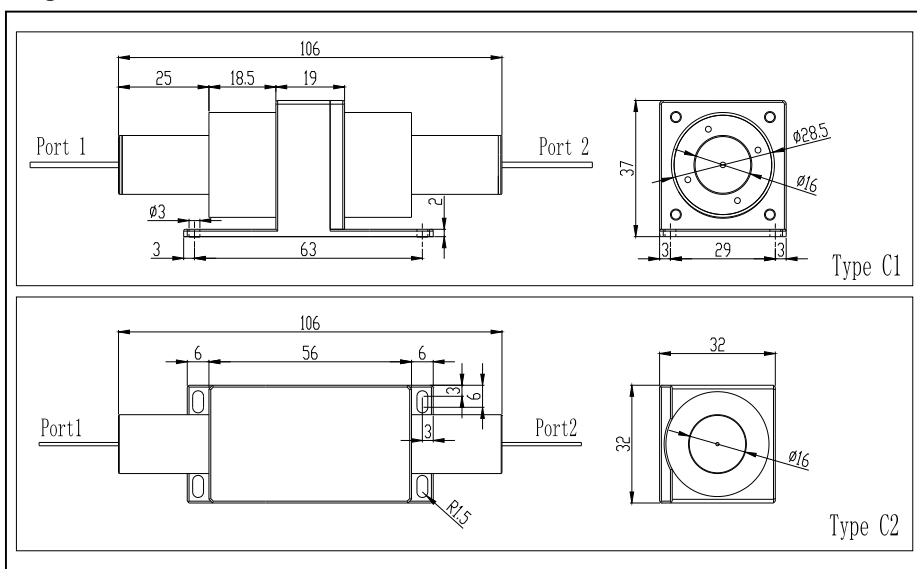
Specifications

Parameters	Unit	Values	
		Grade P	Grade A
Grade		Grade P	Grade A
Center Wavelength (λ_c)	nm	980	
Max. PDL	dB	0.1	0.15
Typ. Peak Isolation	dB	30-35	28-32
Min. Isolation at 23°C	dB	25	23
Typ. Insertion Loss at 23°C	dB	0.8	1.0
Max. Insertion Loss at 23°C	dB	1.2	1.4
Min. Return Loss (input/output)	dB	50/50	45/45
Max. Optical Power (CW)	W	1	
Max. Tensile Load	N	5	
Fiber Type		HI 1060 Fiber	
Operating Temperature	°C	0 to +60	
Storage Temperature	°C	-20 to +75	

*Above specifications are for device without connector.

*For devices with connectors, IL will be 0.3dB higher, RL will be 5dB lower.

Package Dimensions



Ordering Information

HP11-①①-②-③-④④-⑤⑤-⑥

①①: Wavelength
 98 - 980nm
 SS - Specify

②: Package Type
 C1 - Type C1
 C2 - Type C2

③: Grade
 P - Premium Grade
 A - A Grade

④④: Connector Type on Port 1 & 2
 1 - FC/UPC
 2 - FC/APC
 3 - SC/UPC
 4 - SC/APC
 N - None
 S - Specify

⑤⑤: Fiber Type on Port 1 & 2
 L - 900um Loose Tube
 C - 3mm Loose Cable
 S - Specify

⑥: Fiber Length
 1 - 1.0m
 S - Specify