

980nm High Power Polarization Maintaining Isolator

Features

- Low Insertion Loss
- High Isolation
- High Power Handling
- High Return Loss

Applications

- Fiber Laser
- Instrumentation
- Fiber Amplifier
- Lab Research

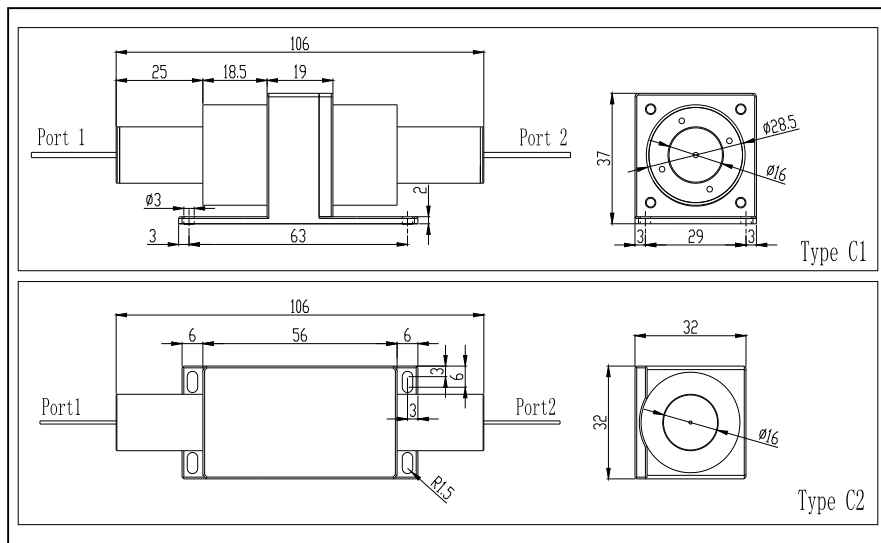
Specifications

Parameters	Unit	Values	
Grade		Grade P	Grade A
Center Wavelength (λ_c)	nm	980	
Min. Extinction Ratio	dB	20	18
Typ. Peak Isolation	dB	30-35	28-32
Min. Isolation at 23°C	dB	25	23
Typ. Insertion Loss at 23°C	dB	0.8	1.0
Max. Insertion Loss at 23°C	dB	1.2	1.4
Min. Return Loss (input/output)	dB	50/50	45/45
Max. Optical Power (CW)	W	1	
Max. Tensile Load	N	5	
Fiber Type		PM 980 Panda Fiber	
Operating Temperature	°C	0 to +60	
Storage Temperature	°C	-20 to+75	

*Above specifications are for device witho

*For devices with connectors, IL will be 0.3dB higher, RL will be 5dB lower,and ER will be 2dB lower.

Package Dimensions



Ordering Information

HPMI-①①-②-③-④④-⑤⑤-⑥

①①: Wavelength

98 - 980nm

SS - Specify

②: Package Type

C1 - Type C1

C2 - Type C2

③: Grade

P - Premium Grade

④④: Connector Type on Port 1 & 2

1 - FC/UPC

2 - FC/APC

3 - SC/UPC

4 - SC/APC

N - None

S - Specify

⑤⑤: Fiber Type on Port 1 & 2

L - 900um Loose Tube

C - 3mm Loose Cable

S - Specify

⑥: Fiber Length

0.8 - 0.8m

S - Specify

A - A Grade